

Intelligent Industrial Safety Management Solution for the Safety of Field Workers



INDEX

01. Introduction

02. Necessity

03. Overview

04. Major Functions

05. Detailed Functions

06. Operating Specification and System Overview

07. Anticipated Effect





Integrated Management System for the Safety of Field Workers



01. Introduction

Introduction



Enforcement of Serious Accident Punishment Act

A law imposing duty to make sure the chief executive **ensures the health & safety of workers**

Enforcement on Jan. 27, 2022
(2-year grace period for business sites with less than 50 workers)



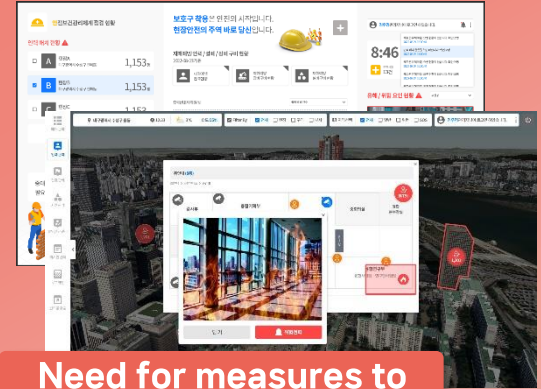
Persistent Incidents/Accidents

2021 Coupang Electric Short-circuit Accident

2022 Gwangju Hwajeong I-Park Collapse Accident

2023 Incheon Geomdan Apartment Collapse Accident

...



Need for measures to prevent accidents

Need for real-time site safety management in connection to selective control system

Verification & improvement of harmful and dangerous factors via real-time management of health and safety status



Integrated Management System for the Safety of Field Workers



02. Necessity

Necessity

Serious Accident Punishment Act

- ① Serious Accident Punishment Act enforced on Jan. 27, 2022.
(2-year grace period for business sites with less than 50 workers)
- ② Imposes duty to chief executive so as to ensure the health and safety of all people working in a business or on a business site
- ③ Strict punishment is given in case of a serious industrial accident due to violation of duties by the chief executive.
- ④ [In case of death] Imprisonment for more than 1 year or fine less than 1 billion Won
[Other] Imprisonment for less than 7 years or fine less than 100 million Won

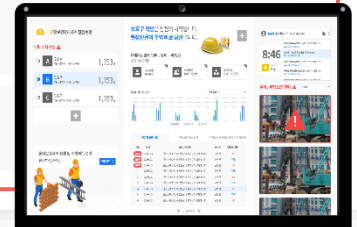
Solution

Location-based safety control system must be established for zero disaster of field workers and efficient safety management.

SAFEWATCHER

Capable of **comprehensive situation management through real-time control of worker location/biometric data & issues**

- ✓ Site & area setting
- ✓ Worker location/attendance & absence management
- ✓ Heavy equipment management
- ✓ On-site drawing management
- ✓ Real-time control of danger
- ✓ Reporting of work completion





Integrated Management System for the Safety of Field Workers



03. Overview



Overview

Comprehensive situation management by connecting location and biometric data of field workers, sensors, and CCTVs based on GIS to prevent serious accidents.



One-stop management of worker & operator attendance, registration mgmt. of heavy equipment, Harmful/dangerous factors




Supports real-time control and response to dangerous situations **in connection to selective control system**



Indoor/outdoor integrated positioning & human traffic flow tracking



Event processing via **real-time video image analysis**

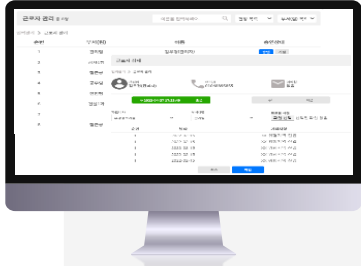


Integrated Management System for the Safety of Field Workers

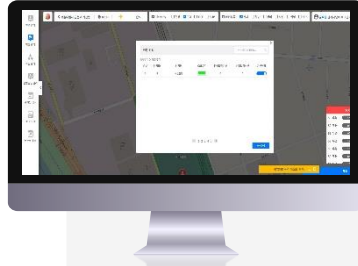


04. Major Functions

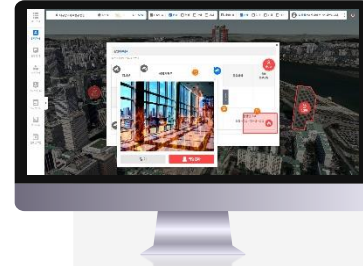
Major Functions



Manpower & attendance/absence, rights management function



Field & resource management function



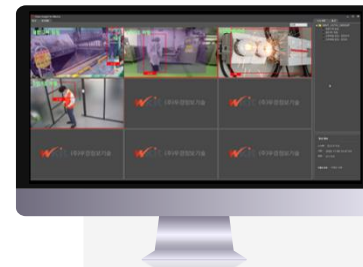
Real-time control & risk alarm function



Log mgmt. & other function



Safe Checker integrated mgmt. function (Integrated dashboard)



Purpose-specific detection function



Integrated Management System for the Safety of Field Workers



05. Detailed Functions

Detailed Functions

01 – Manpower & attendance/absence, and rights management function

Detailed Functions

- ✓ Worker & operator attendance/absence management
- ✓ Designation of worker by area
- ✓ Alarm target person registration
- ✓ Management of menu rights by operator
 - By partner, dept., work type, etc.

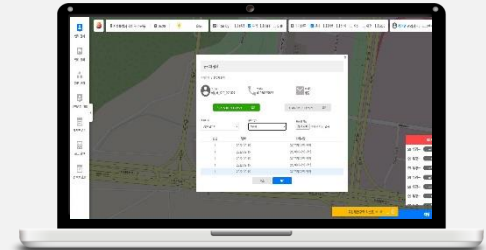


Expected Effect

- ▶ **Efficient management** via worker info registration (attendance, work area, etc.) and **creation of various environments for detecting dangerous situations**



Worker & organization management screen



Worker registration & dept. assignment screen

Detailed Functions

02 – Field & resource management function

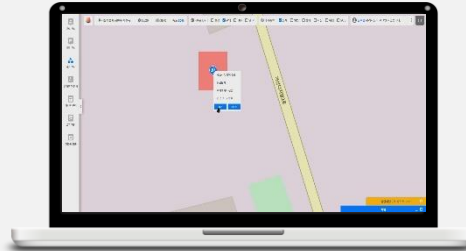
Detailed Functions

- ✓ Heavy equipment registration management (collision prevention, etc.)
- ✓ Field area setting management (Add/delete)
 - Convenient setting using drawing tools
 - Displays Geotiff & CAD(shape) drawing layers on the map
- ✓ Capable of setting whether collision alarm is checked
- ✓ Capable of registering/checking issue info (photo, file, etc.)

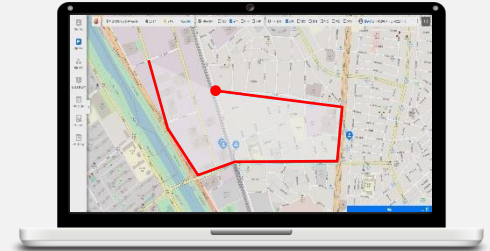


Expected Effect

- ▶ **Efficient management & detection of dangerous situation** through field & equipment registration



Heavy equipment registration mgmt. screen



Field area setting (Drawing tool) screen

Detailed Functions

03 – Real-time control & danger alarm function

Detailed Functions

- ✓ Quick response to issue situation in connection to selective control system
- ✓ Event processing through real-time video image analysis
- ✓ Provides dangerous situation analysis & alarm by major issue
 - Equipment collision prediction/analysis/caution alarm
 - Worker health condition analysis/alert (Safety gear wearing/tripping/fall, etc.)
 - Analysis/alert of dangerous situation for workers (Entry to restricted area, SOS for emergency)
- ✓ Capable of registering/checking issue info (photo, file, etc.)

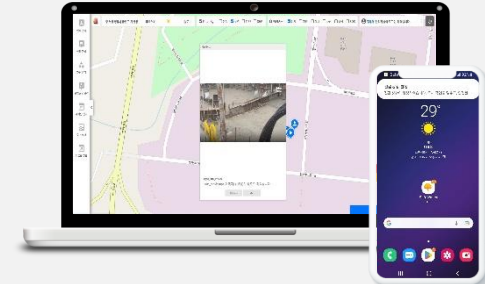


Expected Effect

- ▶ Capable of real-time issue situation control & rapid response through connection with selective control system



Issue detection screen linked to Selective Control System



Urgent/dangerous situation dissemination & alarm screen



Detailed Functions

04 – Log management & other functions

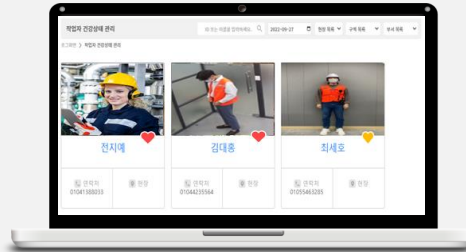
Detailed Functions

- ✔ Work & movement log management (displays time-specific tracking)
- ✔ Records detected risks through bio-signal of workers
- ✔ Prepares and uploads Safe Checker event list/status/checklist by situation
- ✔ Sends push messages and displays on nearby CCTVs
- ✔ Function for sharing photo/video images of on-site risk information

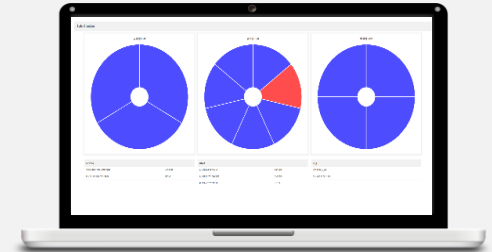


Expected Effect

- ▶ Capable of real-time issue situation control & rapid response through connection with selective control system



Worker bio-signal checking screen



Situation-specific checklist preparation and upload screen

Detailed Functions

05 – Integrated management function for Safe Checker (Integrated dashboard)

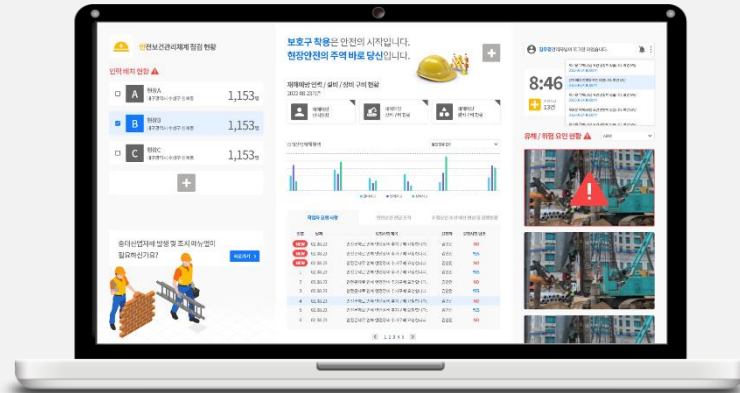
Detailed Functions

- ✓ One-stop management of Health & Safety management status
- ✓ Establishes harmful & risk factor checking & improvement measures
- ✓ Supports communication function for listening to voices from workers and for improvement



Expected Effect

- ▶ **Manages Health & Safety status evidence data all at once** using integrated management dashboard



Integrated management dashboard Safe Checker screen

Detailed Functions

06 – Purpose-specific detection function

Detailed Functions

- ✓ When major event is detected in CCTV image, it notifies the location coordinates of the target to nearby workers and sets off an alarm
- ✓ Detects workers within area set in the video analysis module (Detects workers, and entry into restricted area)
- ✓ Detects condition of a worker from the CCTV image and sends a notification of situations such as safety status or unworn protective gears to a manager or a worker nearby



Expected Effect


- ▶ **Detection/analysis of major event situation according to purpose of application** via intelligent image analysis



Detailed Functions

Major function	Detailed function	Function description	Remarks
Manpower mgmt.	Worker mgmt.	Capable of checking registered workers and modifying info	
	Operator mgmt.	Capable of adding/deleting operator(administrator) and checking info	
	Attendance/absence mgmt.	Capable of checking attendance/absence of workers	
	Worker registration mgmt.	Capable of adding/deleting workers according to area	
Site mgmt.	Site management	Capable of adding and checking sites	
	Area mgmt.	Capable of adding/deleting/modifying area	
	Issue mgmt.	Capable of registering/checking issue info (photo, file, etc.)	
Resource \mgmt.	Equipment mgmt.	Capable of adding/modifying equipment	
		Capable of setting whether collision alarm is checked	
Operational rights mgmt.	Partner mgmt.	Capable of adding/deleting/modifying partner	
	Dept.(team) mgmt.	Capable of adding/deleting/modifying Dept./Team	
	Rights mgmt.	Capable of setting rights according to administrator grade	
Capable of adding/deleting/modifying administrator grade			
Bulletin board mgmt.	Announcements	Capable of adding/deleting/modifying announcements	

Major function	Detailed function	Function description	Remarks
Danger alarm function	SOS	SOS alarm is sent to person in charge when a worker identifies danger	Works via Mobile
	Entry/exit	Upon entry/exit of restricted area, alarm is set off to relevant worker	Sent via Mobile
	Image analysis-based alarm	Alarm given to relevant worker based on images analyzed via image analysis module	
	Alert message	Alarm for emergency evacuation given to all workers in case of an emergency	Sent via Mobile
	Situation notice	Alarm for situation notice given to all workers in case of a dangerous situation	Sent via Mobile
	Biological anomaly	Gives off an alarm to the person in charge when biological anomalies are identified.	Works via Mobile
	Equipment collision	Gives off an alarm to a nearby worker when there is a risk of equipment collision.	Sent via Mobile
Log mgmt.	Management of flow of worker traffic	Capable checking flow of worker traffic	
	Details of worker health condition	Capable of checking worker's condition and worker information.	
		Capable of checking CCTV around workers.	
		Capable of checking info about recent location of workers.	
Safe Checker mgmt.	All Safe Checkers		
Safe Checker	Integrated control screen	Capable of checking statistics by process, space, environment.	
		Capable of checking Notice, Alert, and Log collection status.	
	Process schedule Table	Capable of checking upload of list by process/space/environment.	
	Linkage with video analysis module	Function for detecting intrusion/abnormal behavior	
Function for detecting biological anomalies such as fall, tripping, etc.			



Integrated Management System for the Safety of Field Workers



06. Operating Specification & System Overview

Detailed Configuration Diagram of SAFEWATCHER



CCTV
image transmission

Image analysis module



Sends results according to various situations to SAFEWATCHER Manager by analyzing CCTV images

SAFEWATCHER System

SAFEWATCHER Manager

- Detects dangerous situation by analyzing worker location data
(Intrusion into restricted area, deviation from area, detection of approach to dangerous articles, etc.)
- Manages location of workers and equipment, and work details
- Checks worker's health condition

SafeChecker

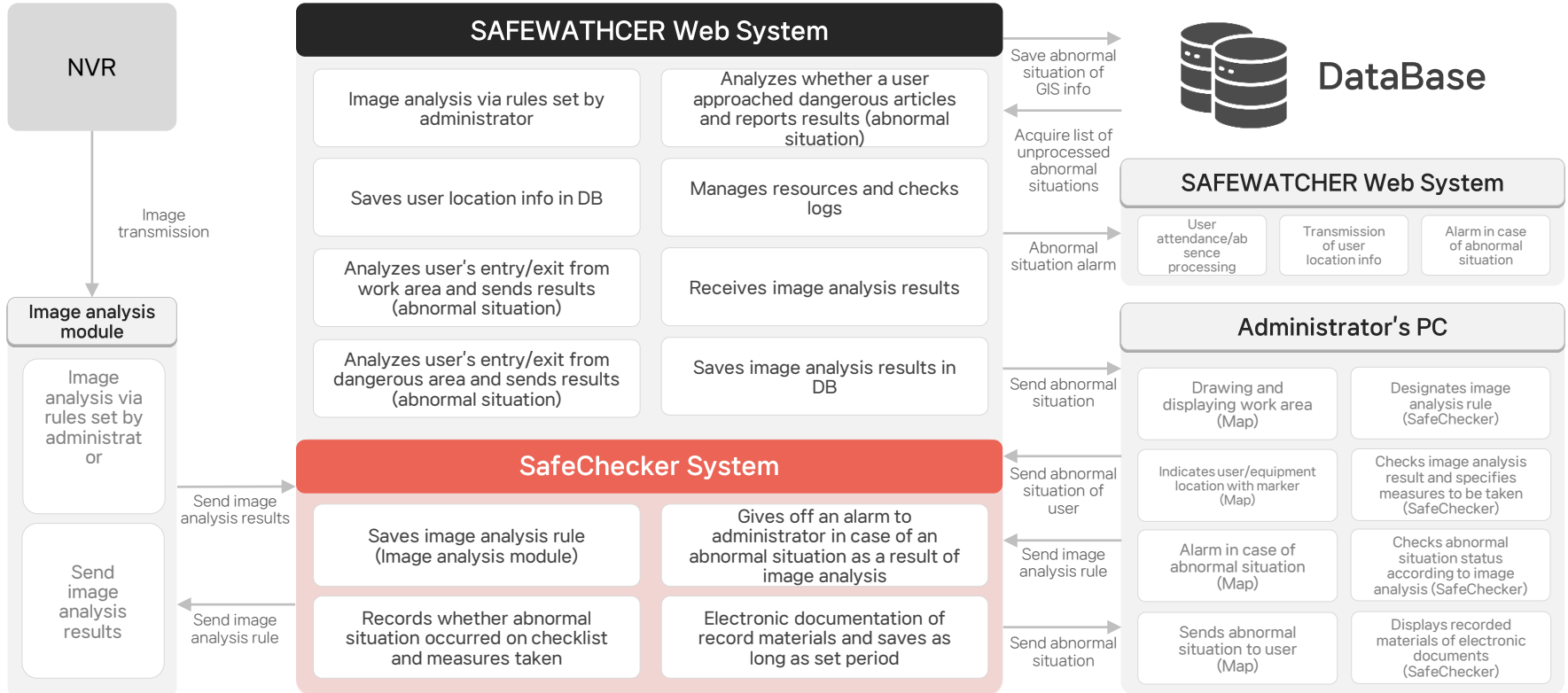
- Collects image analysis results via prepared checklist
- Notifies inadequacy or dangerous situation to workers based on image analysis results
- Prepares materials such as reports and details of issues by using analysis result logs


SAFEWATCHER Client



SAFEWATCHER Manager receives notification of dangerous situations

Detailed Configuration Diagram of SAFEWATCHER





Integrated Management System for the Safety of Field Workers



07. Expected Effects

Expected Effects

(Domestic)

Incidents & Accidents and Cases

Coupage Electric Short-circuit Accident
(Jun. 17, 2021)



Hankook Tire Daejeon Plant Fire
(Mar. 12, 2023)



Expected Effects



Establishment of systematic safety system based on collected info within integrated safety platform



Prevention of safety accidents via image object analysis & selection system based on AI Deep Learning



Securing of field worker safety based on GIS/GPS

We live on SPHERE : AI Xperience



wkitglobal@sphereax.com | www.sphere.com